

MD / BMD MULTI-DIP THERMOCOUPLES

DESCRIPTION

SYSCON Sensors Multi-Dip (MD/BMD) thermocouple is a high precision, non-splash probe, ideal for small furnaces and ladles in slag-free metal. The thermocouple tip is protected by a quartz tube, which provides quick and accurate measurements.

The MD model is ideal for small furnaces where only the quartz tube is dipped in molten metal. An optional reusable heat shield is available to extend the life of the contact block. The BMD variant includes a 3" ceramic shield for additional protection of the contact block and lance. The MD and BMD tips fit securely on the SYSCON Sensors TS-1 Handheld Digital Pyrometer or other standard units.

The Multi-Dip thermocouple tips are designed for investment casting foundries, continuous casting tundish, runners, furnace, ladle, and vacuum-melting operations. It meets clean melt requirements and does not contaminate metal. It is ideal for high-temperatures, alloy heats and small batches.

FEATURES

- Non-splash probe designed for safety
- Precision thermocouple with fast response time
- Robust and versatile
- Built-in ceramic shield (BMD style) or reusable heat shield (MD style)
- Suited for wide range of molten metals including Iron, Steel, Alloys, Copper, Bronze, and Aluminum
- Ideal for various measurement locations: ladle, furnace, tundish, and metal stream
- Manufactured under ISO 9001:2015 certification

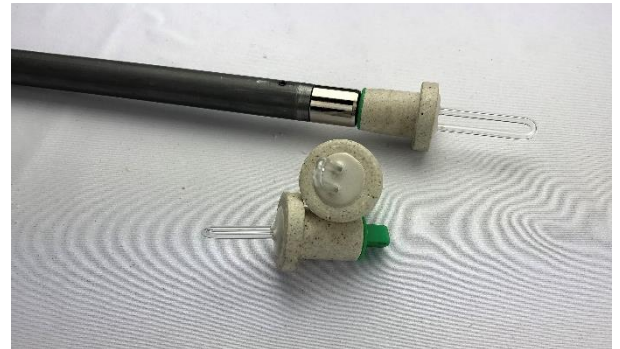
Ordering Information

MD-xx	Multi-Dip thermocouple tip without shield
BMD-xx	Multi-Dip thermocouple tip with ceramic shield
	xx: specify 10 (type-S), 13 (type-R), or 630 (type-B)
MD-HS	Optional reusable heat shield to protect contact block (MD-xx style only)



Technical Specifications

Thermocouple Type	Type S, R, B
Thermocouple Accuracy	±0.25%
Calibration Standard	IPTS 68
Type S, R temp range	400°F - 3182°F 205°C - 1750°C
Type B temp range	400°F - 3308°F 205°C - 1820°C
Estimated Number of Dips	Up to 6 - 8
Response Time	3 - 4 seconds



You've Been Using Our Products Since 1975!

SYSCON International, Inc. has manufactured molten metal temperature measuring and thermal analysis systems for a major private-label customer since 1975. Additional SYSCON Sensors products include:

- TS-1 Handheld Digital Pyrometer
- WM-1 Wall-Mount Digital Pyrometer
- FL-1 Ferrolab Thermal Analysis System
- Single & Multi-Use Thermocouple Tips
- Sampling Cups
- Steel Samplers
- Repair, Replacement Parts, & Calibration Services